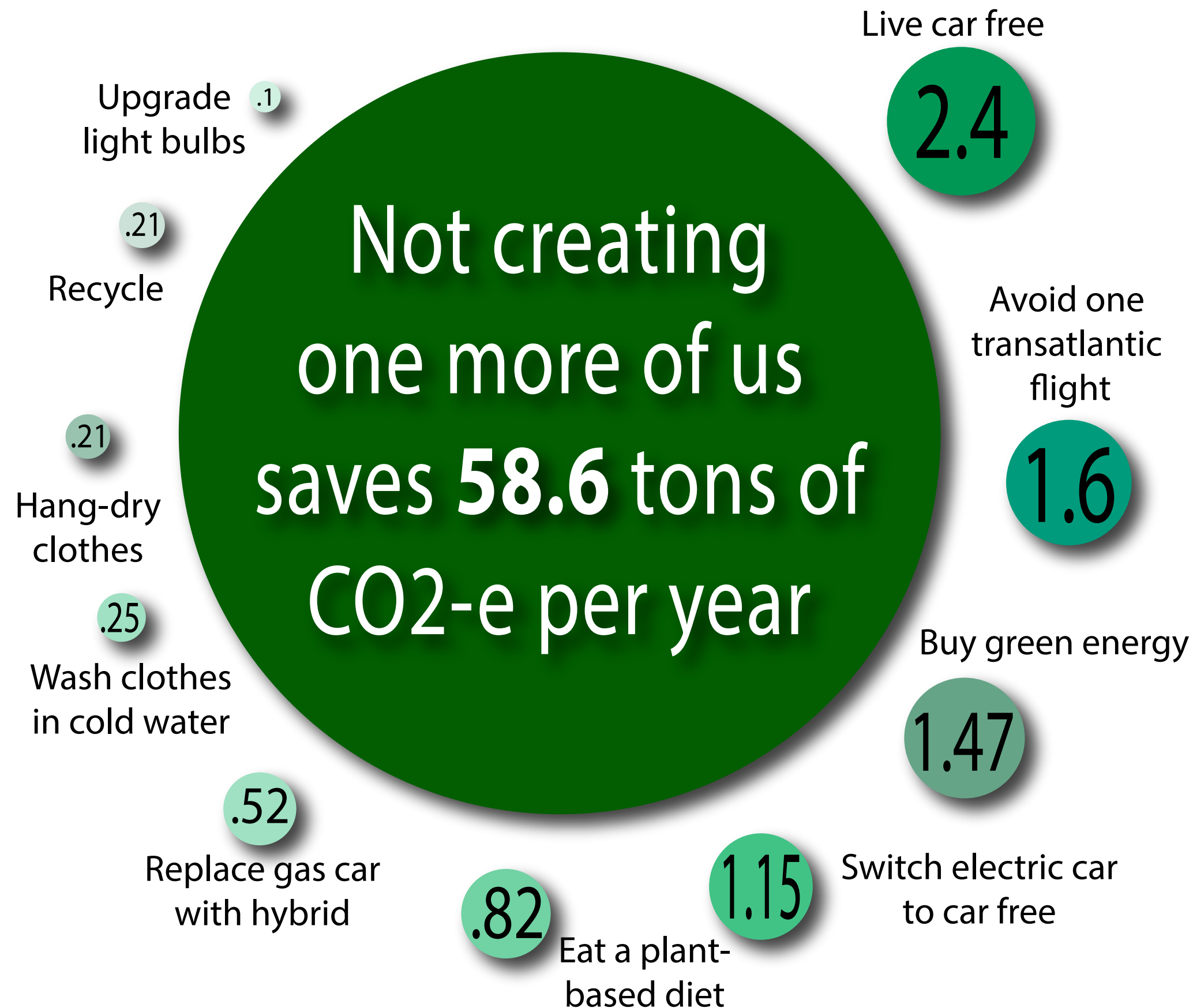


Tons of CO2-equivalent saved per year



• CO2-equivalent (CO2-e) allows other greenhouse gas emissions to be expressed in terms of CO2, based on their relative Global Warming Potential (GWP). CO2 has a GWP of 1 and methane has a GWP of 25.

• The amount of CO2-e saved by each action is based on an average for developed countries.

• CO2-e saved by not creating a new human is found by multiplying an average person's annual emissions by 5.7 to account for descendants' emissions: $10.28 \text{ tons} \times 5.7 = 58.6$ metric tons per year. In the US, $16.5 \text{ tons} \times 5.7 = 94$ metric tons saved.

Units are Metric Tonnes

Source: Wynes & Nicholas, Environmental Research Letters